

ALPHA E



Professional meter for Radon concentration

- Suitable for indoor and outdoor measurement as well as personal exposure and dose
- Ultra-small, light-weight
- Simultaneous recording of air temperature, humidity and pressure



ALPHA E

Ultra-small continuous radon monitor

AlphaE is a versatile device for **fast radon monitoring in buildings, outdoors or mines**. Due to its light-weight and small dimensions, it can also perfectly be used to measure the personal radon exposure and to manage personal dose.

AlphaE is fast and accurate providing a **first reliable measurement after 2 hours** (faster response with higher radon levels). Low radon levels below 100 Bq/m³ (2.7 pCi/l) can be measured as specified by the latest World Health Organization (WHO) recommendations (12% uncertainty at 1 sigma/24 hours).

Up to 6 months battery life allows long-term measurement without mains power.

Permanent operations via mains supply are possible via USB port.

In addition to the radon concentration, the air temperature, pressure and humidity as well as the signals of the built-in tampering detector are simultaneously recorded, all accompanied by respective time stamps.

A multi-purpose radon device



Indoor activities

AlphaE is well designed for the measurement at low radon concentrations in buildings (private houses, workplaces...)



Outdoor activities

With its large temperature and humidity range, AlphaE is suitable for underground activities & harsh environment.

Accessories available:

wall support, belt pouch, suitcase or dust protection bag.



Technical features

DETECTION PRINCIPLE

diffusion chamber with silicon diode

MEASUREMENT RANGE

From 20 Bq/m³ to 10 MBq/m³
(from 0,54 pCi/l to 270 nCi/l)

SENSITIVITY

3 cph at 100 Bq/m³ (2,7 pCi/l)

DOSE RANGE

From 0 to 1 Sv (from 0 to 10 rem)

DISPLAY

6 digit LCD + 5 digit AN, backlight

ADDITIONAL SENSORS

- Air temperature
- Air pressure
- Air humidity
- Motion

AUTONOMY

Up to 6 months
(USB rechargeable)

DIMENSIONS

108 x 68 x 30 mm

WEIGHT

165 g

Radon monitoring range

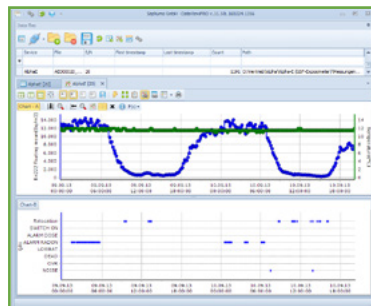
Discover other products of Bertin Instruments

ALPHA GUARD



The reference in Radon measurement worldwide

Easy data analysis



DataVIEW Software

The user-friendly software for AlphaE data analysis!
PRO version available with additional features for professional applications.